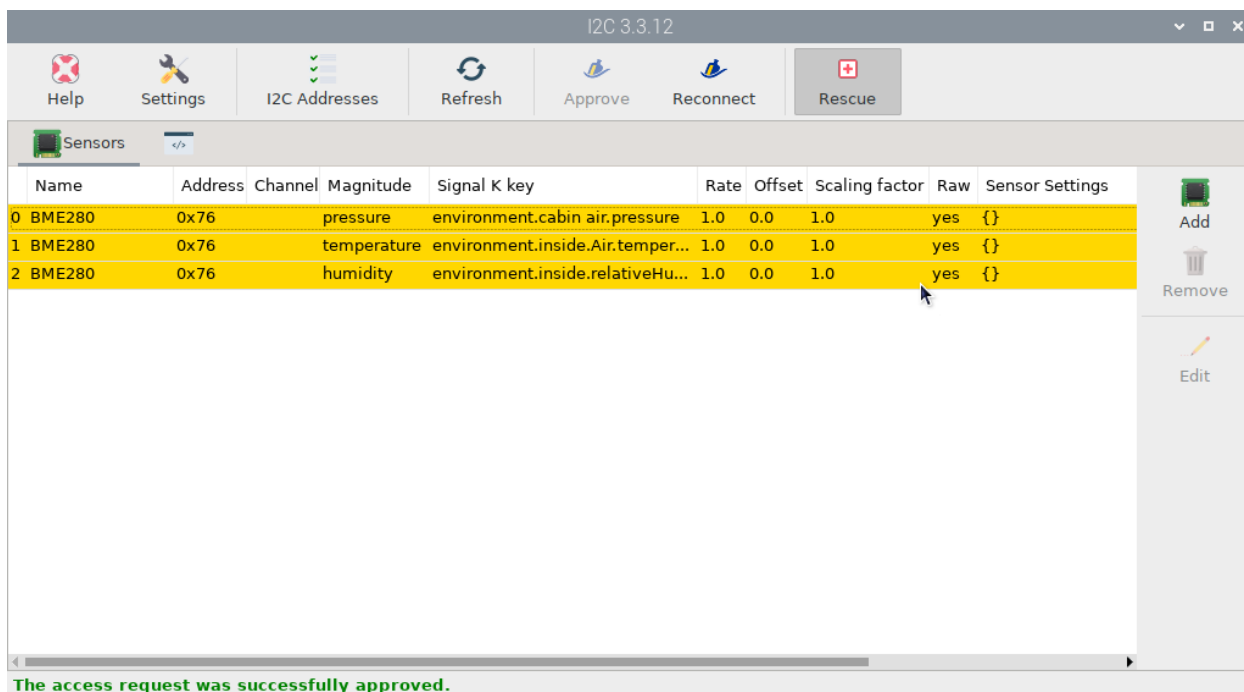
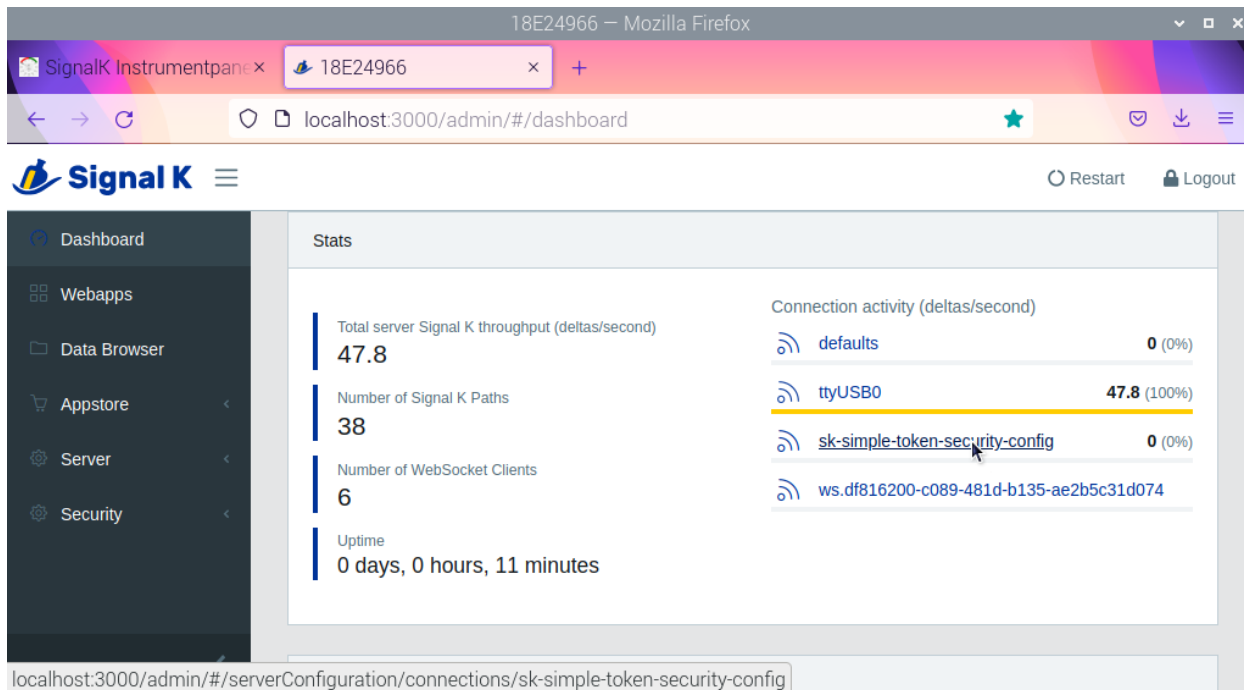


Started the I2c again today. Screenshot from today. Note the rescue is highlighted.



The server dashboard, note the ttyusb with data from the Actisense NTG-1. No data from the one starting with ws.....



Data browser shows no data from the I2c. shows a validation token for I2c.

18E24966 — Mozilla Firefox

SignalK Instrumentpane x 18E24966

localhost:3000/admin/#/databrowser

Signal K Restart Logout

Dashboard Webapps Data Browser Appstore Server Security

sensors.gps.fromBow	5	06/18 14:26:18	default
sensors.gps.fromCenter	0.3	06/18 14:26:18	default
validation.I2C	"d77be269-807e-47fa-9d33-73dfd70f6611"	06/18 14:34:39	OpenP

Sources

OpenPlotter: {} 0 keys
 defaults: {} 0 keys
 sk-simple-token-security-config: {} 0 keys

Looking at connections, we see ttyusb0 which is the Acisense NTG-1

18E24966 — Mozilla Firefox

SignalK Instrumentpane x 18E24966

localhost:3000/admin/#/serverConfiguration/connections/-

Signal K Restart Logout

Dashboard Webapps Data Browser Appstore Server Settings Data Connections Plugin Config

Connections

ID	Data Type	Enabled	Logging
ttyUSB0	NMEA2000	Yes	Yes

Add

Source Priorities Settings

Use Source Priorities to filter incoming data so that data from lower priority sources is discarded when there is fresh data from some higher priority source.

Incoming data is not handled if the latest value for a path is from a higher priority source and it is not

Rebooted and this happens to ttyusb0. Will not reconnect,

18E24966 — Mozilla Firefox

18E24966 x +

localhost:3000/admin/#/login

Signal K

Connection & Plugin Status

(1 errors)

Id	Last Error	Status
sk-to-nmea0183		Started
ttyUSB0		Closed, reconnecting...

Signal K Server version 1.46.3 Sponsor Signal K

Logged in as Pi - 18E24966

Now, if we look at the dashboard, no data on ttyUSB0 but the ws... has data

18E24966 — Mozilla Firefox

18E24966 x +

localhost:3000/admin/#/login

Signal K

Stats

Total server Signal K throughput (deltas/second)	3.0
Number of Signal K Paths	46
Number of WebSocket Clients	3
Uptime	0 days, 1 hours, 13 minutes

Connection activity (deltas/second)

defaults	0 (0%)
ttyUSB0	0 (0%)
sk-simple-token-security-config	0 (0%)
ws.df816200-c089-481d-b135-ae2b5c31d074	3 (100%)

We get data from the BME280, in the data Browser, but no network data.